



**18 Dollview Avenue Rasmussen QLD**

3 2 2

Positioned just off Riverway Drive on a corner allotment, this high-set home delivers space, flexibility, and practicality - with the added bonus of a fully enclosed lower-level ideal for extended family or teenage retreat living.

With one owner for over 34 years, the home reflects the changes made as a family grew.

The main residence is located upstairs and accessed via both front and rear staircases. Upstairs offers three bedrooms, open-plan living and dining, polished timber floors, and a functional kitchen with ample storage.

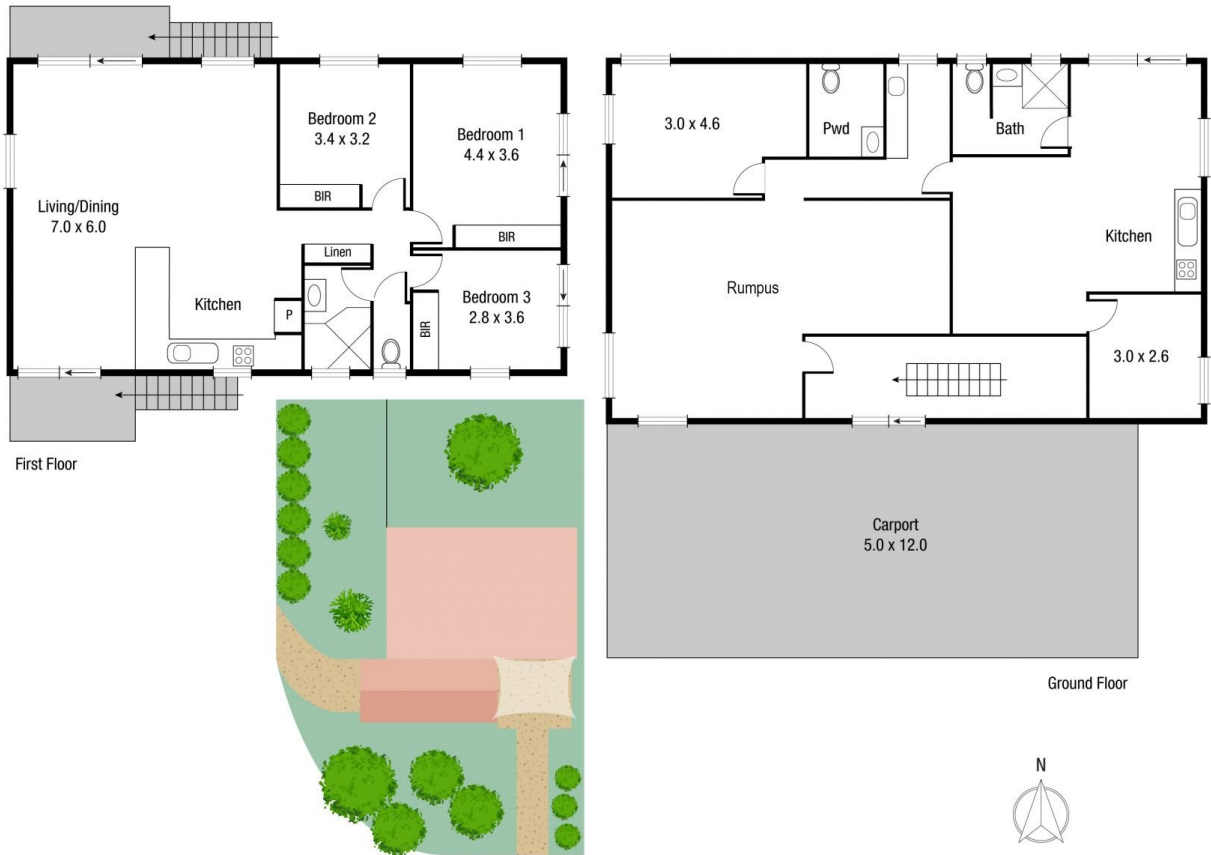
The lower level has been modified to suit a teenager or

[For full version visit the website](https://www.nathanlynham.com)

**Type** : House  
**Price** : Offers over \$599,000  
**Land Size** : 624 sqm  
**View** : <https://www.nathanlynham.com/8631226>



**Shelly Lynham**  
07 4723 3222



Scale in metres. Indicative only. Dimensions are approximate. All information contained herein is gathered from sources we believe to be reliable. However we cannot guarantee its accuracy and interested persons should rely on their own enquiries.

**TOTAL AREA : 278.3 sq.m**

**18 Dollview Ave, Rasmussen**