



12 Fuji Court Mount Louisa QLD

4 2 2

Positioned in a quiet, family-friendly court and set on a slightly elevated allotment surrounded by quality homes, this well-appointed low-set residence delivers outstanding value and everyday practicality in the heart of Mount Louisa.

Designed with functionality in mind and perfectly suited to the generous 729m² block, the home offers four well-proportioned bedrooms, a separate lounge, and an open-plan family and dining area that forms the hub of the home. Neutral, modern tones throughout create a fresh and welcoming feel, enhanced by new carpets and a recent internal repaint completed in January 2026.

At the rear of the home, a spacious covered patio takes full

Type : House
Price : Offers Over \$799,000
Land Size : 729 sqm
View : <https://www.nathanlynham.com/8609753>

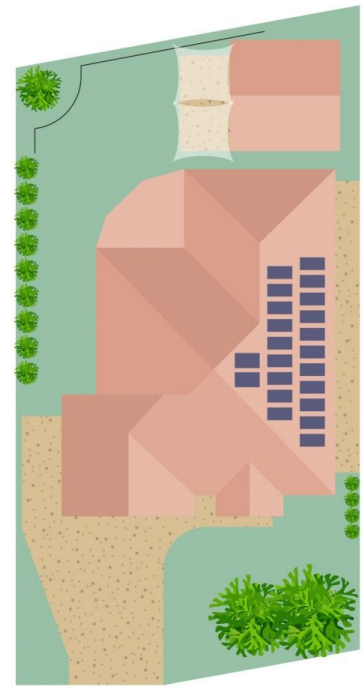
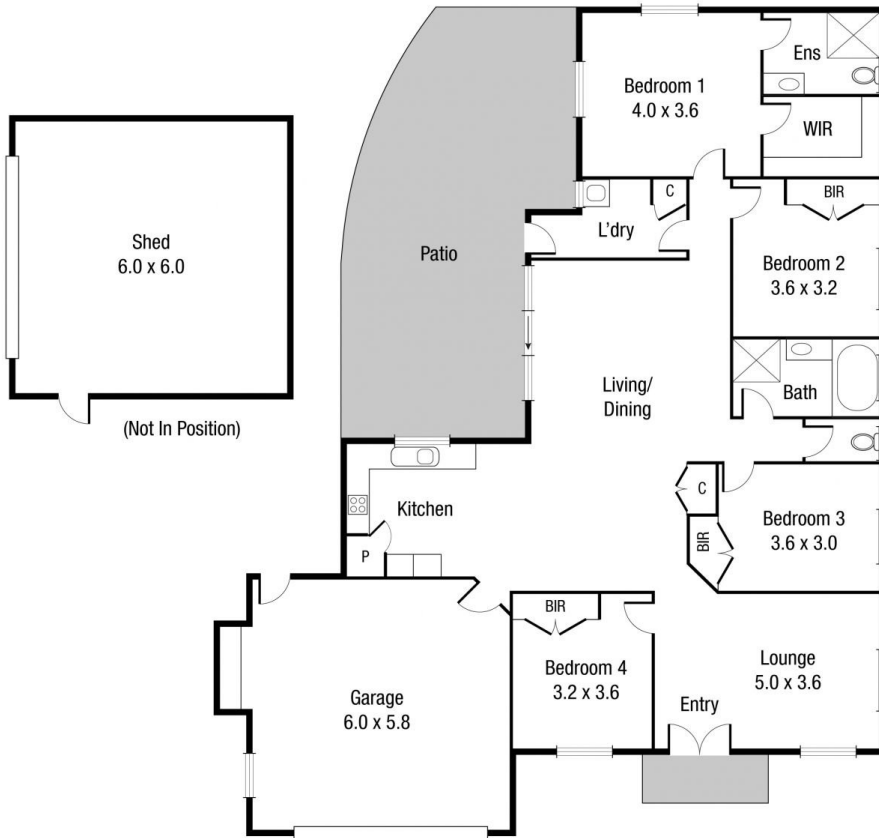


Shelly Lynham
07 4723 3222



Graham Lynham
07 4723 3222

[For full version visit the website](https://www.nathanlynham.com)



Scale in metres. Indicative only. Dimensions are approximate. All information contained herein is gathered from sources we believe to be reliable. However we cannot guarantee its accuracy and interested persons should rely on their own enquiries.

TOTAL AREA : 220.4 sq.m

12 Fuji Ct, Mount Louisa