



21/7 Hale Street North Ward QLD

2 2 2

With an enviable hilltop position and sweeping ocean views across Palm Island, North Ward, Magnetic Island and Cleveland Bay, this spacious two-bedroom apartment is set within one of Townsville's original resort-style complexes, Stanton Crest II. Offering size, outlook and lifestyle amenities rarely found in unit living, this property presents a truly unique opportunity.

Located on the first level with a convenient entry directly from the undercover car park, the fully air-conditioned unit boasts an impressive 167m² under roof, making it the largest of the "executive" unit floor plans in the complex's original design.

Designed with a highly functional layout, both the master

[For full version visit the website](https://www.nathanlynham.com)

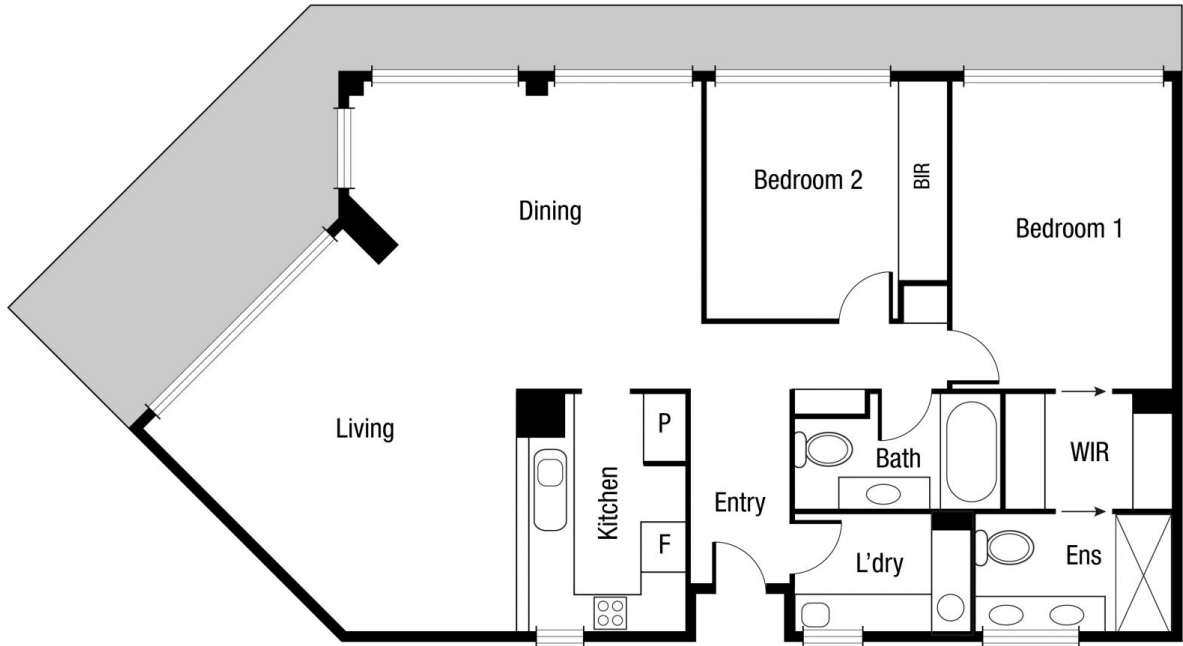
Type : Unit
Price : \$800,000 Neg
Building Size : 167 sqm
Land Size : 167 sqm
View : <https://www.nathanlynham.com/8602695>



Graham Lynham
07 4723 3222



Shelly Lynham
07 4723 3222



Scale in metres. Indicative only. Dimensions are approximate. All information contained herein is gathered from sources we believe to be reliable. However we cannot guarantee its accuracy and interested persons should rely on their own enquiries.

21/7 Hale St