



Lynham



Lynham



Lynham



Lynham

41 Fitzroy Street Cranbrook



2



1



1

### Family Home With 3-Bay Shed On 810sqm Block

Centrally located close to major shopping centres and schools this high-set family home offers more than usual.

Set on a low maintenance 810sqm allotment, the home has 2 bedrooms upstairs, with a large lounge & dining.

While the home's original layout and size is a 3 bedroom, the owners have utilised the 3rd bedroom to create a larger lounge room and allows the potential for the buyer to return the home to a 3 bedroom layout.

Underneath the home, which is enclosed for storage & laundry space

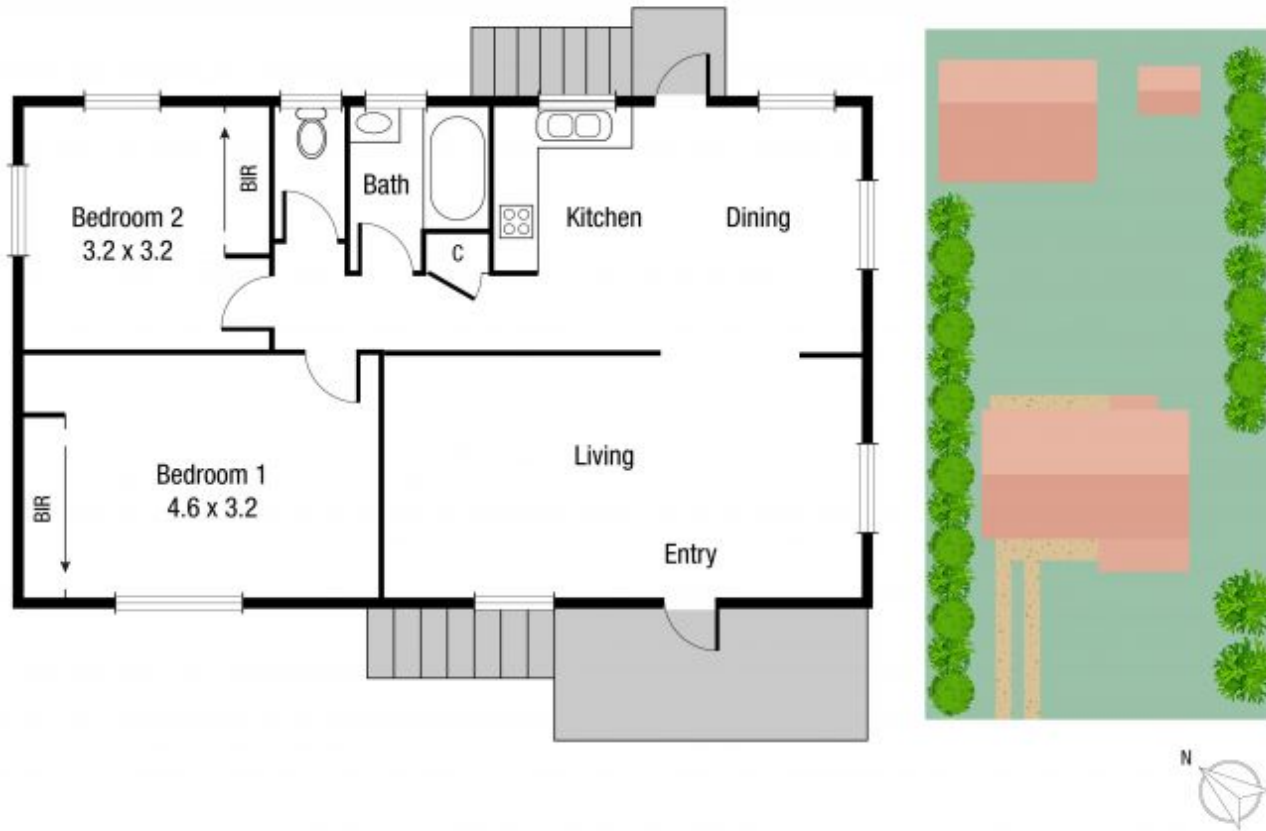
Complimenting the property is a large 3-bay shed at the rear of the home with side access to the shed.

**UNDER CONTRACT - Offers Over \$399,000**

Type: House  
Land: 810 m2

**Nathan Lynham**

0427 695 162



Scale in metres. Indicative only. Dimensions are approximate. All information contained herein is gathered from sources we believe to be reliable. However we cannot guarantee its accuracy and interested persons should rely on their own enquiries.

TOTAL AREA : 78.2 sq.m

41 Fitzroy St, Cranbrook